



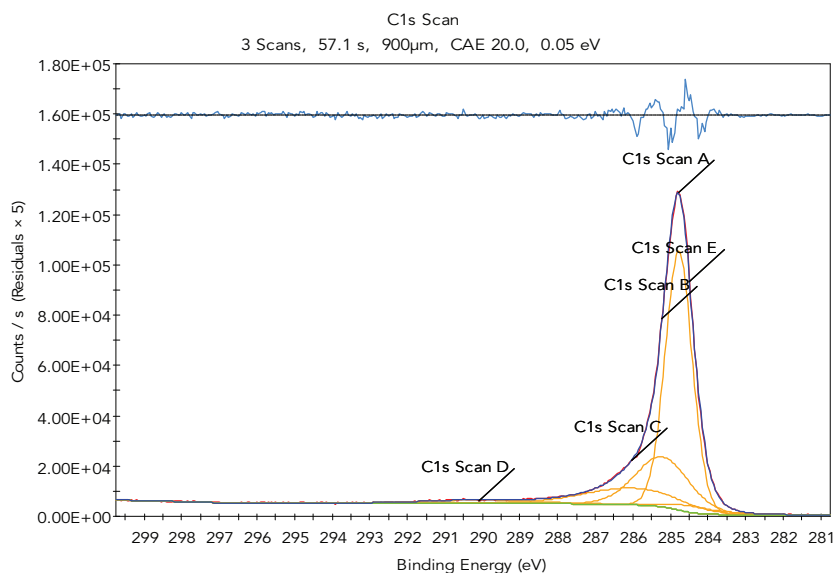
## Product Details

Start-up Graphite : Sri Lanka - C99+ Vein Graphite, Particle size range: 63-90  $\mu\text{m}$   
 Appearance : Soft Black Powder Platelets  
 Tapped Density :  $5.9 \times 10^{-3} \text{ g/cm}^3$

## X-ray Photoelectron Spectroscopy (XPS)

\*C/O ratio: 19.33

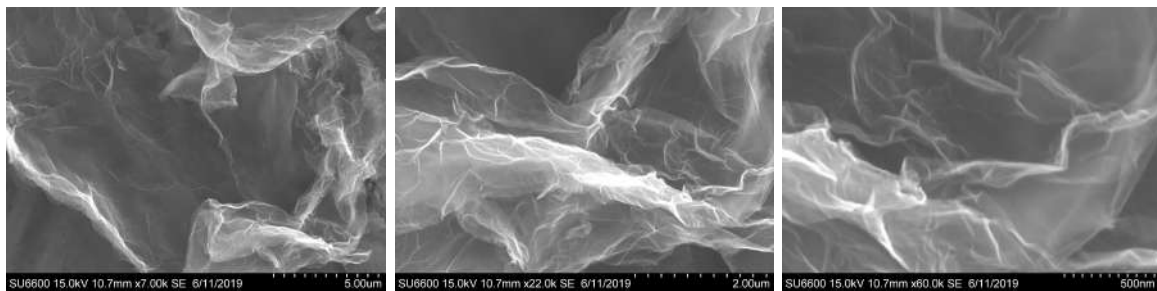
Name	Peak BE	Atomic %			Avg. %
		scan 1	scan 2	scan 3	
C1s	285.10	94.90	94.53	94.58	94.67
O1s	533.66	4.67	5.06	4.96	4.90
S2p	164.92	0.43	0.41	0.46	0.43



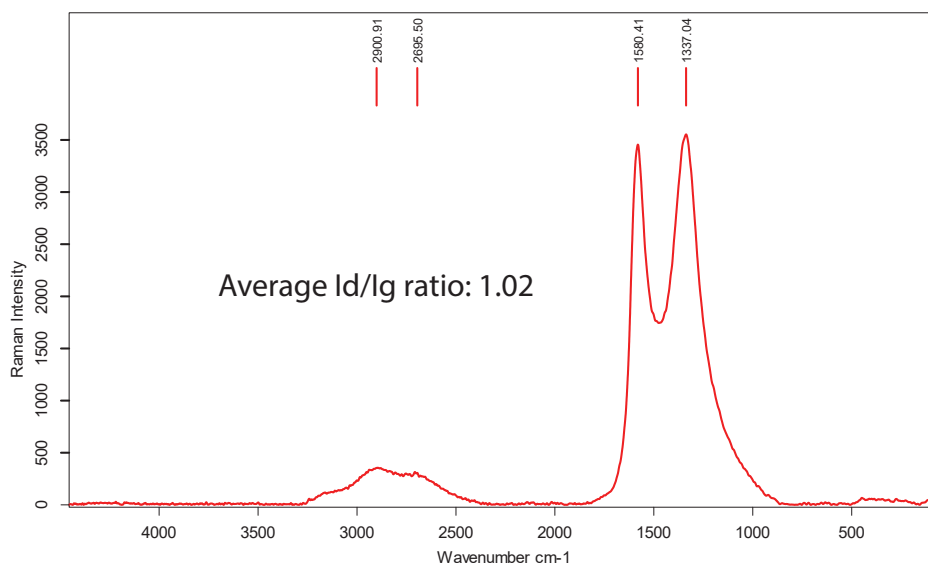
Name	Bond type	Peak BE	Atomic %
C1s Scan A	sp <sup>2</sup> carbon	284.78	60.75
C1s Scan B	sp <sup>3</sup> carbons	285.22	22.57
C1s Scan C	epoxy	286.02	13.58
C1s Scan D	carboxyl	290.11	3.1

Peak table for XPS narrow scan

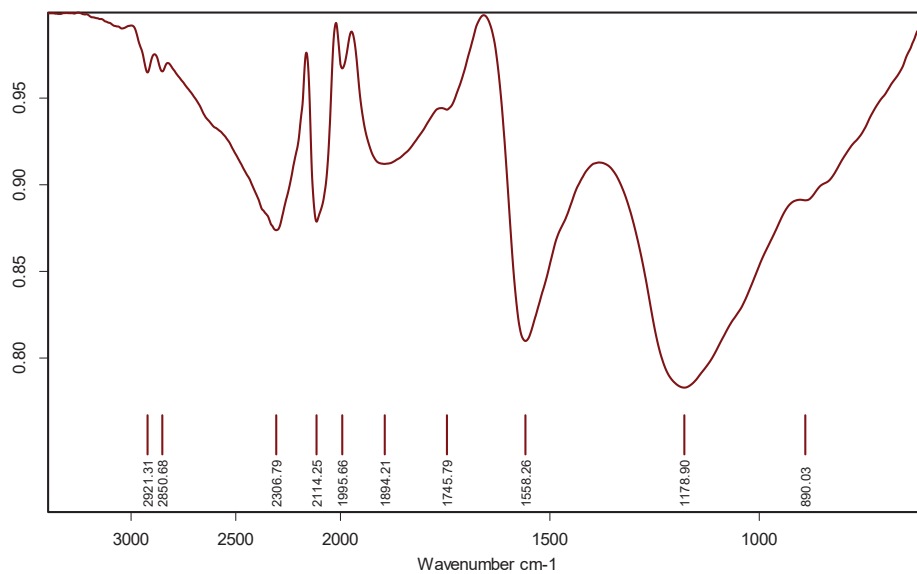
## Scanning electron microscope (SEM)



## RAMAN Analysis



## FTIR Analysis



### BET Surface Area Analysis

	Sample	rGO
BET Surface Area (m <sup>2</sup> /g)	538.08	688.70
BJH Surface Area (m <sup>2</sup> /g)	1.765	4.25
Pore Volume (cc/g)	4.25	
Pore Diameter (nm)		