

Product Details

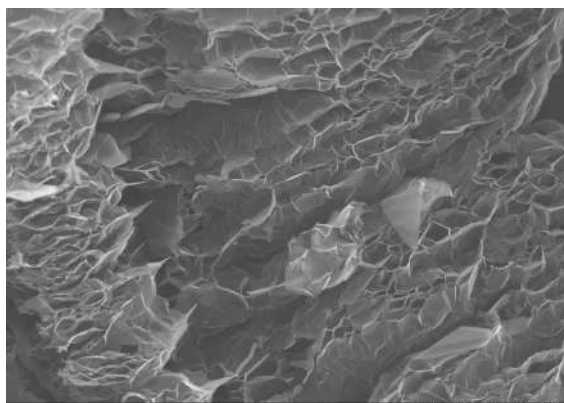
Start-up Graphite : Sri Lanka - C99+ Vein Graphite, Particle size range: 63-90 μm
 Appearance : Soft Black Powder Platelets
 Tapped Density : $\sim 0.047 \text{ g/cm}^3$

X-ray Photoelectron Spectroscopy (XPS)

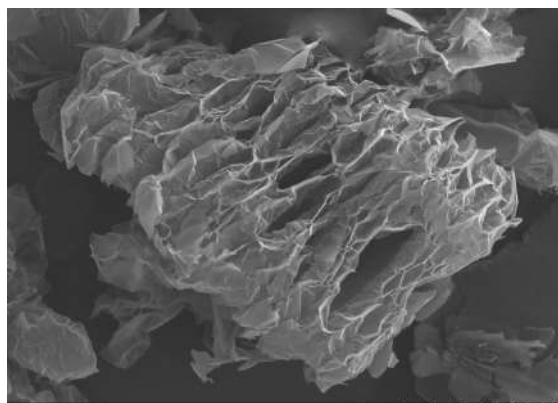
*C/O ratio: 13.79

Name	Peak BE	Atomic %			Avg. %
		scan 1	scan 2	scan 3	
C1s	284.82	89.63	90.56	89.11	89.77
O1s	530.49	6.37	6.31	6.85	6.51
N1s	400.33	2.28	1.74	2.35	2.12
S2p	167.46	1.73	1.38	1.69	1.6

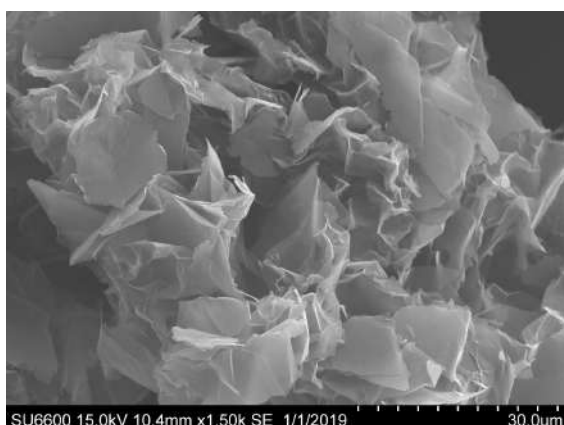
Scanning electron microscope (SEM)



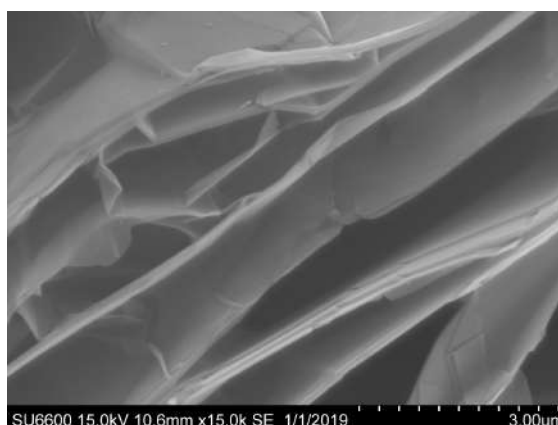
SU6600 15.0kV 10.6mm x700 SE 1/1/2019 50.0um



SU6600 15.0kV 10.5mm x700 SE 1/1/2019 50.0um



SU6600 15.0kV 10.4mm x1.50k SE 1/1/2019 30.0um



SU6600 15.0kV 10.6mm x15.0k SE 1/1/2019 3.00um

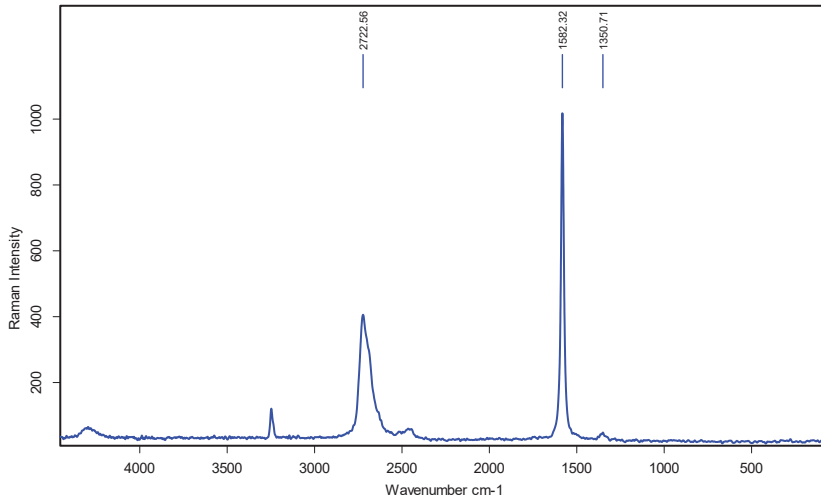


Ceylon Graphene Technologies

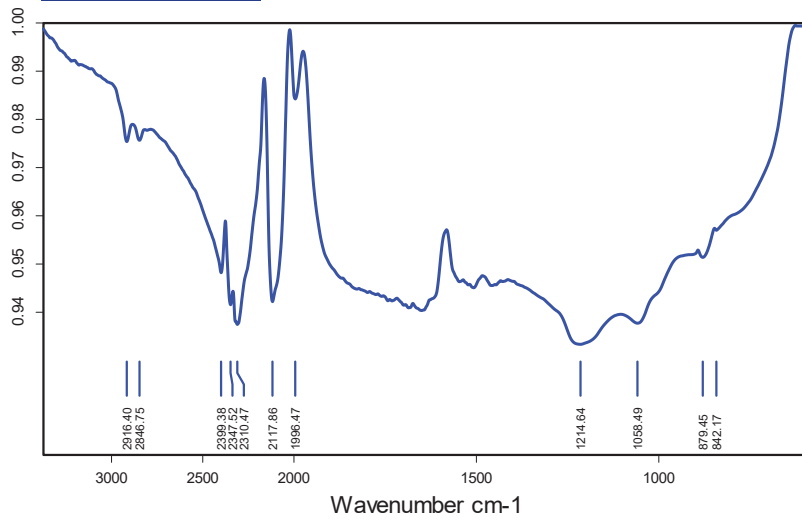


NATIONAL GRAPHENE ASSOCIATION

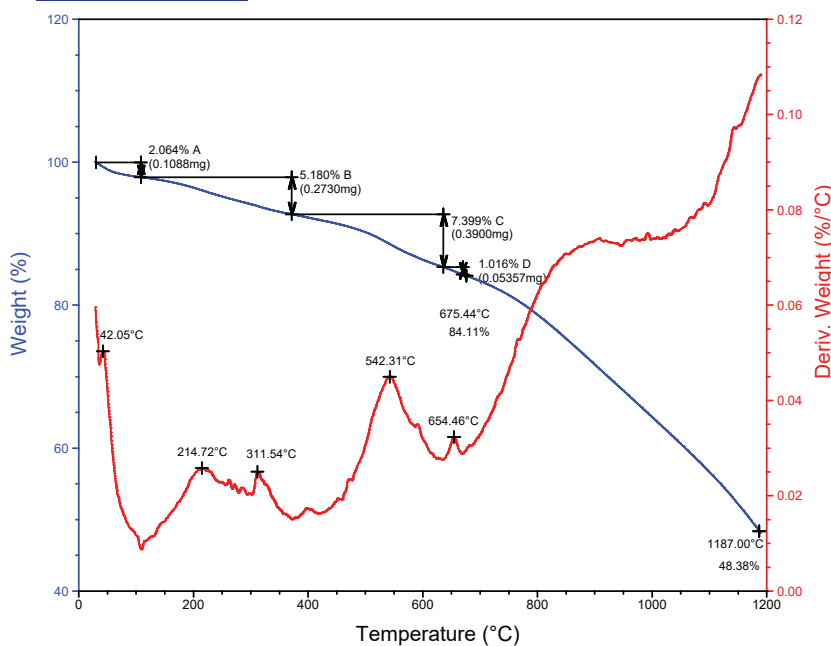
RAMAN Analysis



FTIR Analysis



TGA Analysis



BET Surface Area Analysis

Sample	Expanded Graphite
BET Surface Area (m ² /g)	8.375
BH Surface Area (m ² /g)	10.521
Pore Volume (cc/g)	0.057
Pore Diameter (nm)	3.931

Particle Size Analysis

Cumulative frequency Q3(x) [%]	Avg. Particle Size(x) [µm]	Analysis 1	Analysis 2	Analysis 3
10	18	18.1	17.9	18.1
50	33.1	33.5	32.9	32.8
90	57.8	58.8	57.6	57